

EDITION .01

WaterPex INSTALLATION PROCEDURE

For WaterPex Pe-Xa
Compression Sleeve System



If it's Couta... It's the Best!



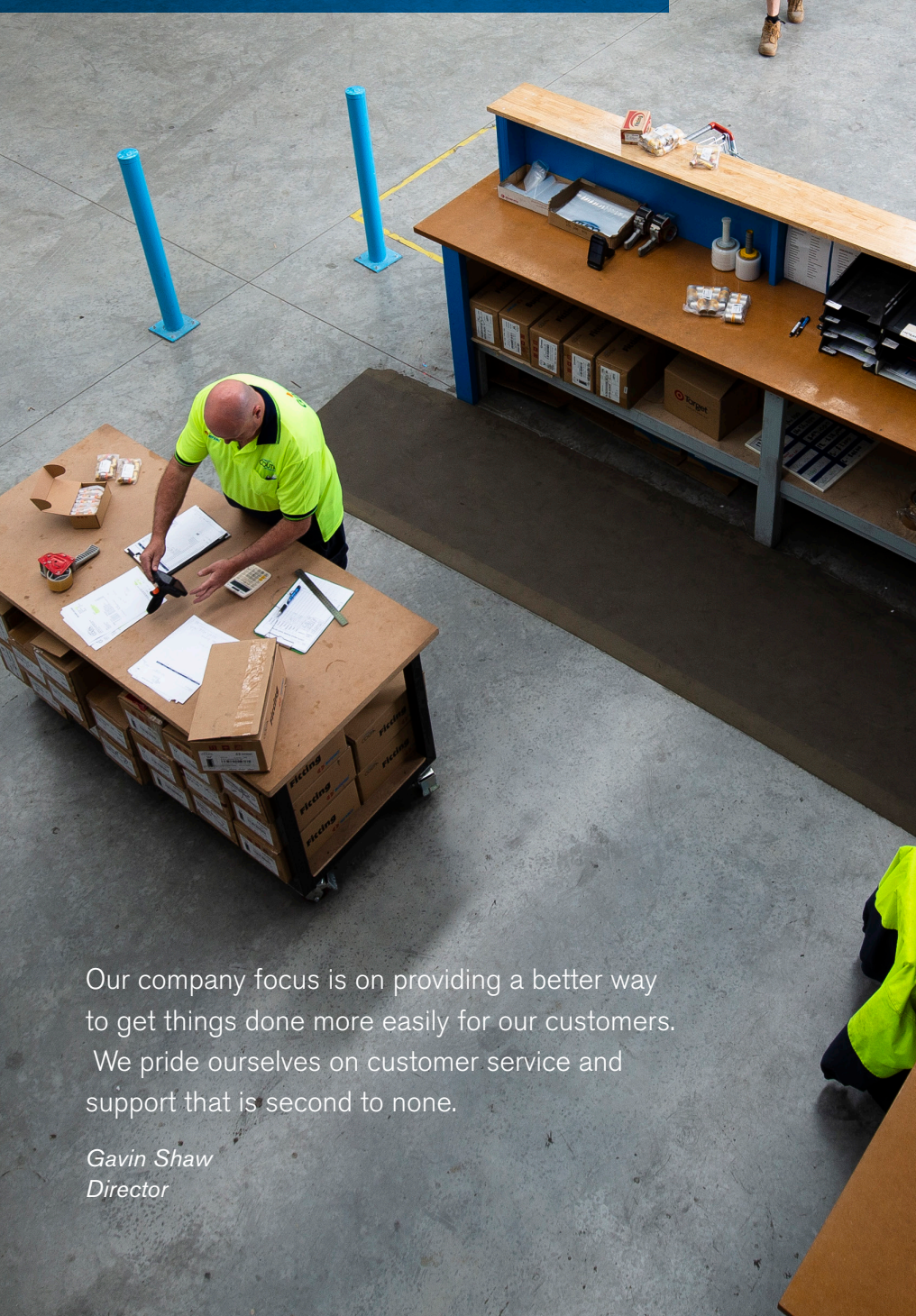


Our job is to make your job easier.

Installation Procedure for WaterPex Pe-Xa Compression Sleeve System

Contents

1. Cutting of the pipe
2. Bending of the pipe
3. Applying the Sleeve onto the pipe
4. Expanding the pipe
5. Insertion of the pipe onto the fitting
6. Completing the compression joint
7. Testing
8. Installation Faults
9. Common installation faults that lead to leakage and failure of joints



Our company focus is on providing a better way
to get things done more easily for our customers.

We pride ourselves on customer service and
support that is second to none.

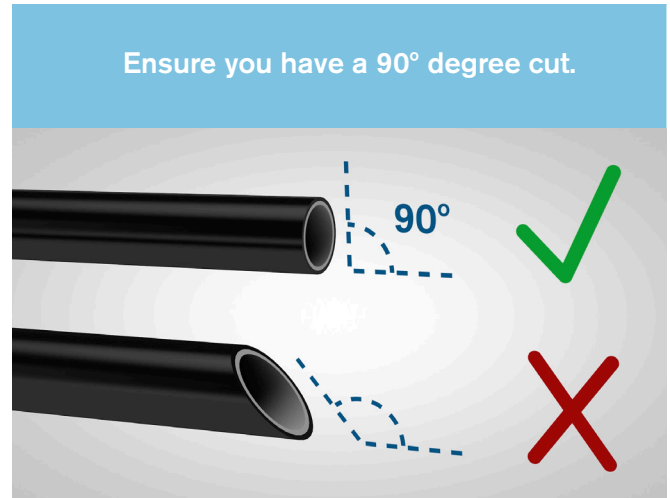
Gavin Shaw
Director

Step 1. Cutting of pipe

Use your pipe cutting tool to cut the pipe to your desired length.

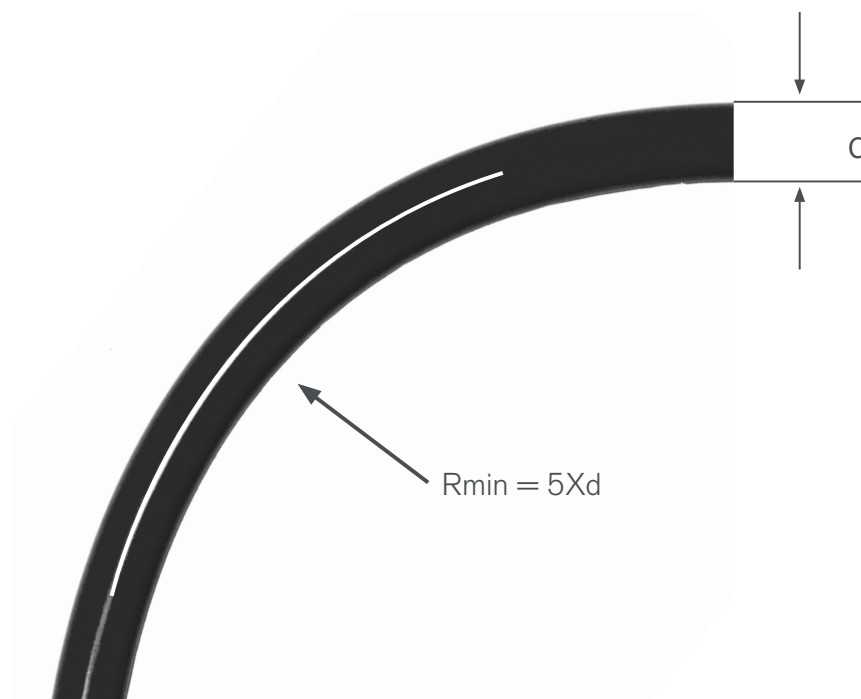


Ensure you have a 90° degree cut.



Step 2. Bending of the pipe

When bending the pipe the minimum bending radius is $5 \times D$ where D is the nominal outside diameter of the pipe. Bending may be accomplished by hand. A preformed plastic support bend is the preferred method.



Step 3. Applying the Sleeve

The compression sleeve has one end that is bevelled as shown on the left and the opposite end is not bevelled as shown below.



Non Bevelled Edge of the sleeve.



Slide the sleeve onto the pipe ensuring the bevelled edge is facing the fitting.



Step 4. Expanding the pipe

Insert the expander head into the end of the pipe, ensuring that the sleeve is well clear of the area that is to be expanded.

Expand the pipe by fully closing the expanding tool and holding in the closed position momentarily.

Then release the handle, rotate the pipe 30 deg on the expander head and repeat the expanding process once more. This ensures that the inside of the pipe area is expanded evenly.



Step 5. Insertion of the pipe onto the fitting

With the pipe expanded, quickly push the pipe on to the fitting all the way up to the shoulder of the fitting.



Step 6. Completing the compression joint

Place fitting into the jaws of the slide tool ensuring that you have the correct size jaws.



Operate the tool so that the sleeve is drawn over the pipe until it reaches the shoulder of the fitting.



The completed compression joint will have the sleeve pulled all the way up to the face of the fitting as shown right.



Step 7. Testing

Visually check the installation and then pressure test the WaterPex systems as per AS/NZS 3500 Plumbing & Drainage-Housing installation code. This specifies a test pressure of 1500 kpa for 30 minutes with no pressure drop observed.

It is recommended that you use the SafeGuard testing system for your hydrostatic testing needs. Safeguard is a hydrostatic testing solution that provides a digital records of all tests and demonstrates that the job has been tested and conforms to requirements.

Step 8. Installation Faults

Sleeve has not been pulled up all the way to the face of the fitting.



Sleeve has been placed with the bevel edge facing the wrong direction. You can tell it is the wrong direction by the indented ring on the sleeve.

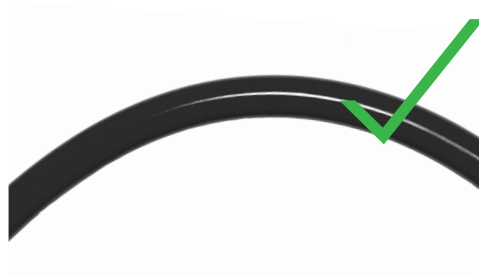
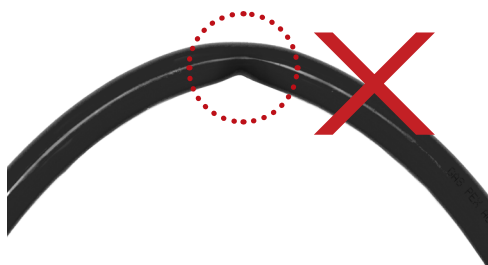


If you complete the joint with the bevel edge of the sleeve in the wrong direction the pipe will be pushed out at the face of the fitting. This may result in leakage and/or total failure of the joint over time.



Step 8 Installation faults

If you kink the pipe while bending you must cut it out.



Step 9. Common installation faults that lead to leakage and failure of joints

Pipe has not been cut at 90 deg.

Pipe has not been expanded correctly.

Sleeve has been put onto the pipe with the bevel edge facing the wrong direction.

Sleeve has not been pulled all the way up to the shoulder of the fitting.

No visual check of fittings and not pressure tested.

